

## New Product Release announcement

Zeta Corporation is very excited and proud to share new detection kits based on in-house researched and developed. The new polymer based 2-Step detection is for Anatomic Pathology market for Immunohistochemistry application. Zeta is incorporating highly sensitive technology to amplify the signals of primary antibodies that are Target-Validated and Characterized for IHC on FFPE tissue sections.

Zeta provides over 300 IVD antibodies for cancer targeted therapy and immunotherapy due to gene mutations, chromosomal translocations or gene amplifications.

### Zeta MAX Polymer HRP Detection Kit

The Zeta Max HRP Polymer Detection Kit uses an amplifying reagent (Zeta Max Amplifier) in conjunction with Zeta HRP Polymer (anti-mouse HRP/anti-rabbit HRP) to increase the signal intensity of primary antibodies. The mouse primary antibody specific to an antigen on formalin-fixed paraffin-embedded (FFPE) tissue section is detected by the Zeta Max Amplifier. The Amplifier reagent is then detected by Zeta HRP Polymer. The Zeta HRP Polymer and the Zeta Max Amplifier reagents are ready-to-use and provided in convenient dropper bottles.

The Zeta MAX utilizes unique technology to amplify mouse primary antibodies and particularly antibodies expressed in the nucleus. Zeta MAX reagent penetrates the tissues to tag the primary antibody sites to amplify and generate multitude sites for the *micro*-HRP polymer to bind.

The Zeta MAX detection is offered in a kit format with the DAB chromogen as well or offered just as the detection reagent. The product details are as follows:

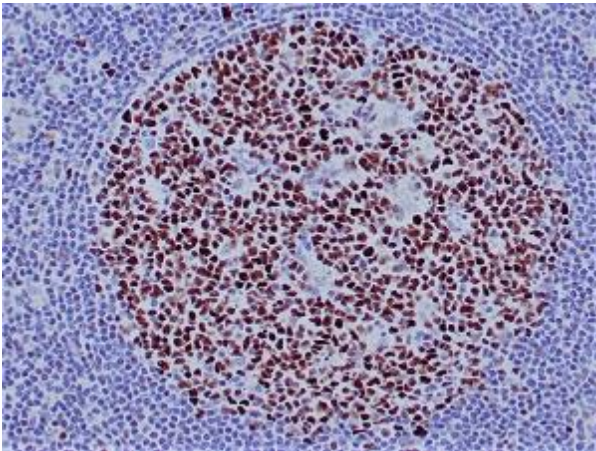
ZD14 Zeta Max Polymer Detection Kit (without DAB)

ZD15 Zeta Max Polymer Detection Kit (with DAB)

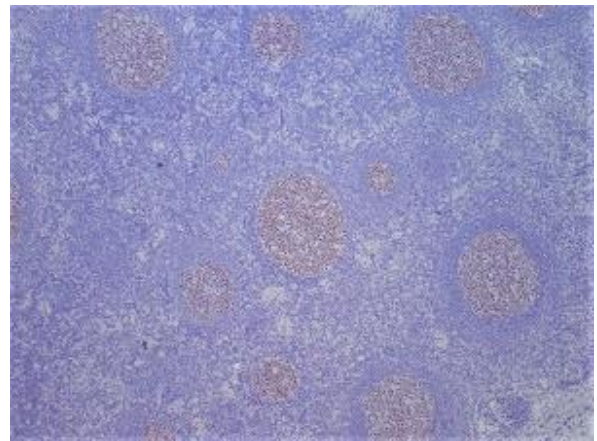
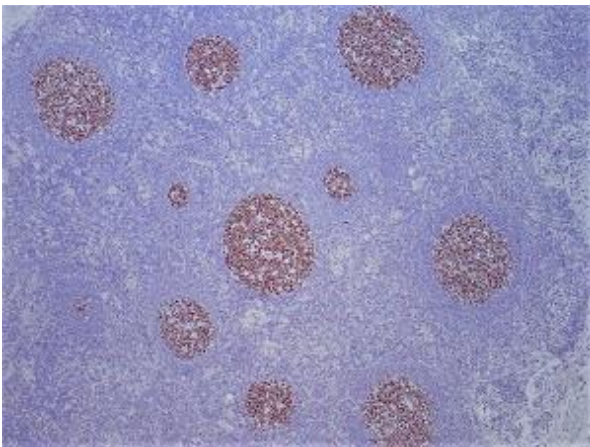
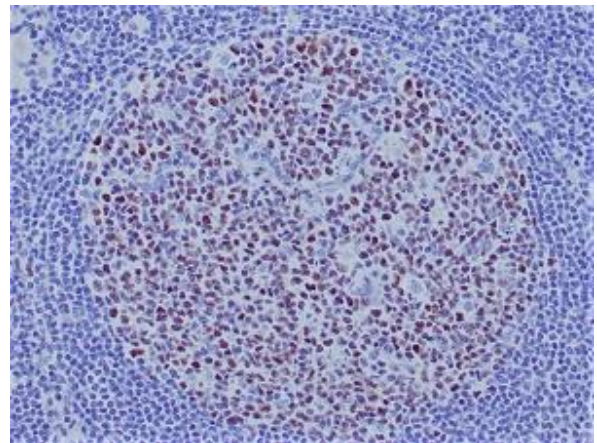
All of our antibodies work on formalin-fixed paraffin embedded (FFPE) tissue sections. As an **ISO 13485:2016 certified** biomedical company, all our antibody clones are scientifically selected to fit the need of clinical immunohistochemical laboratories. Our primary anti- bodies are manufactured by FDA certified GMP facilities in the USA and purified by affinity chromatography with >99% purity.

Zeta is happy to offer some staining images below that are stained in-house with and without the Zeta MAX reagent for amplification of Bcl6 under the same conditions and antibody dilution.

*Bcl6 stained using Zeta MAX detection*



*Bcl6 stained using regular detection*



All of our antibodies work on formalin-fixed paraffin embedded (FFPE) tissue sections. As an **ISO 13485:2016 certified** biomedical company, all our antibody clones are scientifically selected to fit the need of clinical immunohistochemical laboratories. Our primary anti- bodies are manufactured by FDA certified GMP facilities in the USA and purified by affinity chromatography with >99% purity.