

New Product Release announcement

Zeta is very excited and proud to share new IVD antibodies researched and developed for Anatomic Pathology market for Immunohistochemistry. Zeta is incorporating highly sensitive technology to develop many of these Monospecific primary antibodies that are Target-Validated and Characterized for IHC on FFPE tissue sections.

Zeta's Monospecific Monoclonal Antibodies were produced through traditional hybridoma technologies. The clones were screened by ELISA and gel electrophoresis to determine their specificity. A protein microarray (protein chip) for selection of monospecific antibody in a high-throughput method is utilized to track the specific antigen-antibody interactions.

Zeta provides over 300 IVD antibodies for cancer targeted therapy and immunotherapy due to gene mutations, chromosomal translocations or gene amplifications.

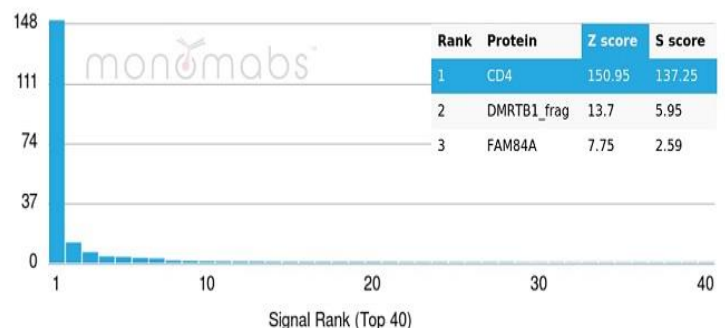
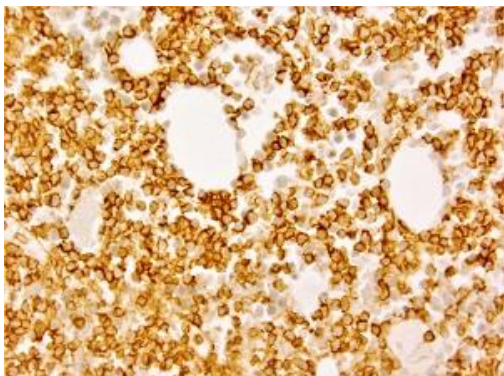
CD4 Monospecific Monoclonal Antibodies

IVD

Anti-mouse: clone ZM180, Cat # Z2482

Anti-rabbit: clone ZR110, Cat # Z2420

CD4, a single chain transmembrane glycoprotein, is found on a T cell subset (helper/inducer) representing 45% of peripheral blood lymphocytes. It is also present on 80% of thymocytes and at a lower level on monocytes.



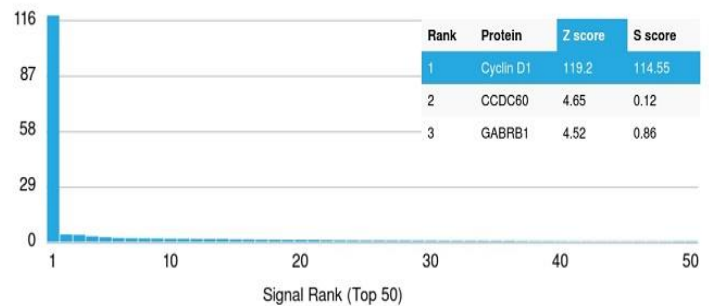
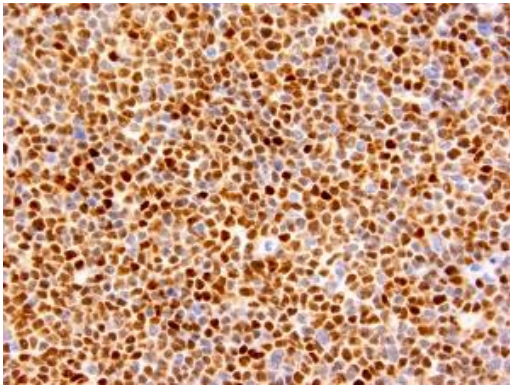
Cyclin D1 (BCL-1) Monospecific Monoclonal Antibodies

IVD

Anti-mouse: clone ZM178, Cat # Z2480

Anti-rabbit: clone ZR197, Cat # Z2515

Cyclin D1 or PRAD-1 or bcl-1 is one of the key cell cycle regulators, and functions in association with cdk4 and/or cdk6 by phosphorylating the Rb protein. It is a putative proto-oncogene over expressed in a wide variety of human neoplasms including mantle cell lymphomas (MCL).



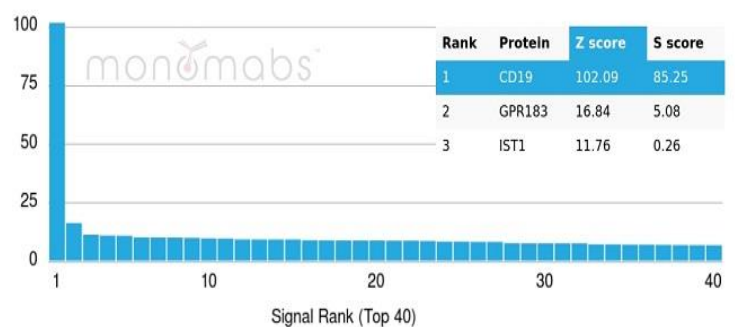
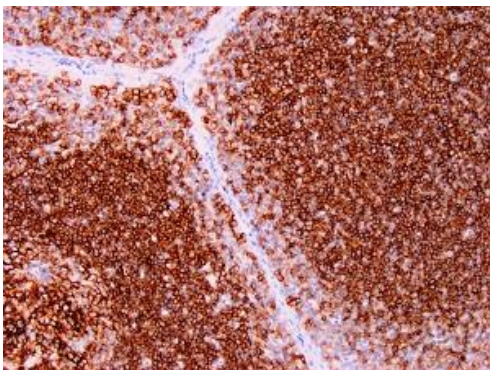
CD19 Monospecific Monoclonal Antibodies

IVD

Anti-mouse: clone ZM179, Cat # Z2481

Anti-rabbit: clone ZR212, Cat # Z2547

CD19 positivity is seen in the vast majority of B-cell neoplasms and commonly at a lower intensity than normal B-cell elements. CD19 expression is not seen in Reed-Sternberg cells of classic Hodgkin lymphoma.



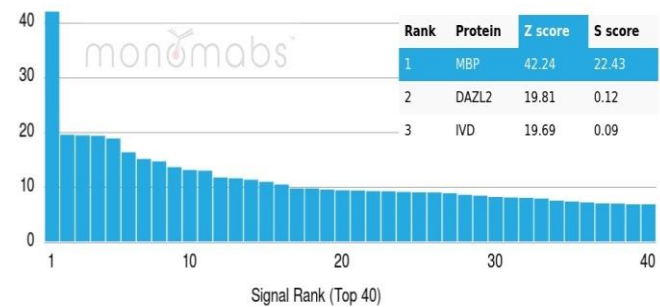
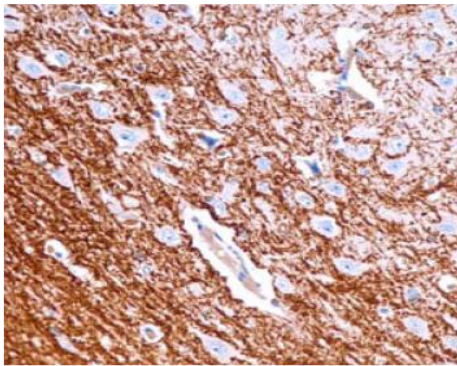
All antibodies are offered in different format and size with the Suffix after the Catalog #s; "L", "S" & "T" for Concentrated antibodies in 1.0 ml, 0.5 ml & 0.1 ml sizes and Suffix "P" for Ready To Use (RTU) in 7 ml.

Myelin Basic Protein Monospecific (MBP) Monoclonal Antibodies IVD

Anti-mouse: clone ZM202, Cat # Z2485

Anti-rabbit: clone ZR109, Cat # Z2411

Myelin Basic Protein (MBP) plays an important role in epithelial cell adhesion. A decreased expression is linked to metastatic potential and poor prognosis in breast cancer. In combination with p120 Catenin, it is useful for differentiating between ductal and lobular breast carcinomas.



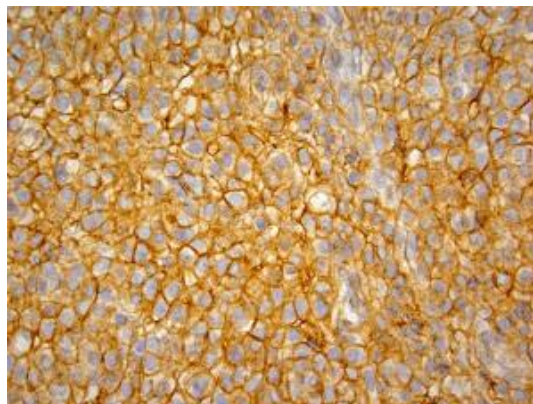
Collagen IV Monoclonal Antibodies

IVD

Anti-mouse: clone ZM177, Cat # Z2410

Anti-rabbit: clone ZR108, Cat # Z2478

Collagen IV is a major constituent of the basement membranes along with laminins. Collagen IV is useful in detecting the loss of parts of basement membrane in carcinomas.



ZETA Corporation

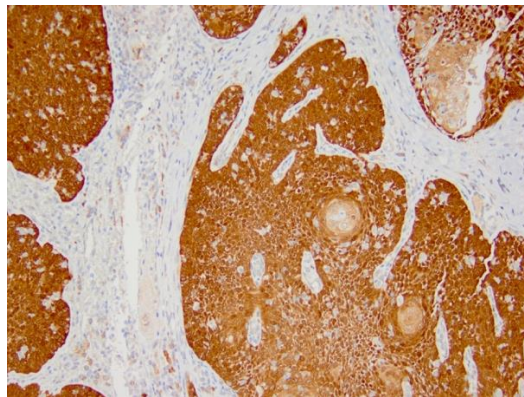
TARGET-VALIDATED AND CHARACTERIZED IVD ANTIBODIES
FOR PATHOLOGY AND IMMUNOTHERAPY

P16^{INK4a} Monoclonal Antibodies

Anti-mouse: clone JC2, Cat # Z2567

IVD

p16^{INK4a} is a tumor suppressor protein. Expression of p16^{INK4a} (p16 positive) is highly correlated with human papilloma virus (HPV) infection in cervical and head and neck squamous cell carcinomas (HNSCC).



All of our antibodies work on formalin-fixed paraffin embedded (FFPE) tissue sections. As an **ISO 13485:2016 certified** biomedical company, all our antibody clones are scientifically selected to fit the need of clinical immunohistochemical laboratories. Our primary antibodies are manufactured by FDA certified GMP facilities in the USA and purified by affinity chromatography with >99% purity.

ZETA Corporation

zeta-corp.com

Arcadia, California

info@zeta-corp.com

P (626) 355-2053

© 2019, Zeta Corporation. All Rights Reserved.

All antibodies are offered in different format and size with the Suffix after the Catalog #s; "L", "S" & "T" for Concentrated antibodies in 1.0 ml, 0.5 ml & 0.1 ml sizes and Suffix "P" for Ready To Use (RTU) in 7 ml.