

# EGFR (Clone ZM16)

## Mouse Monospecific Monoclonal Antibody

**Specificity:** Human. Does not react with mouse and rat. Others-not known

**Immunogen:** Recombinant human full-length EGFR protein

**Ig Class:** IgG2b/k

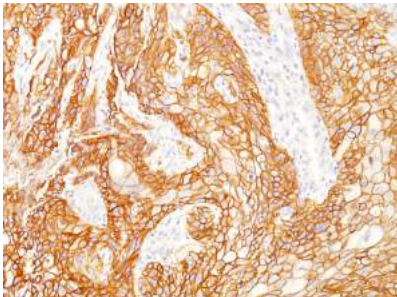
**Storage:** Store vial at 4°C. When stored at 2-8°C, this antibody is stable for 24 months

**Staining procedures:** Use formalin-fixed and paraffin-embedded sections. *Retrieval conditions:* Pretreatment of tissue with proteolytic enzymes should be performed prior to staining. *Detection methods:* Polymer anti-mouse/rabbit Ig detection system. *Working dilution:* 1:100-200; *Positive Control:* Lung adenocarcinoma. *Cellular Localization:* Membranous.

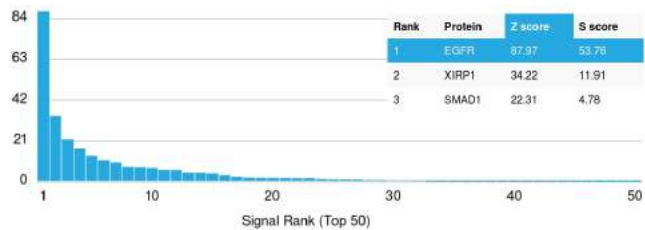
**Description:** This MAb recognizes a protein of 170kDa, identified as EGFR. EGFR is type I receptor tyrosine kinase with sequence homology to erbB-1, -2, -3 -4 or HER-1, -2, -3 -4. It binds to Epidermal Growth Factor (EGF), Transforming Growth Factor- $\alpha$  (TGF- $\alpha$ ), Heparin-binding EGF (HB-EGF), amphiregulin, betacellulin and epiregulin. EGFR is overexpressed in tumors of breast, brain, bladder, lung, gastric, head & neck, esophagus, cervix, vulva, ovary, and endometrium. It is predominantly present in squamous cell carcinomas.

**Intended Use:** This antibody is intended for in vitro diagnostic (IVD) use. EGFR (clone ZM16) mouse monoclonal primary antibody is intended for laboratory use in the detection of EGFR in formalin-fixed, paraffin-embedded tissue by immunohistochemical (IHC) staining. The staining results should be interpreted by qualified pathologists in conjunction with the patient's relevant clinical history.

**Supplied As:** Purified antibody in Tris-HCl buffer containing stabilizing protein and <0.1% sodium azide.



*Formalin-fixed, paraffin-embedded human lung squamous cell carcinoma stained with anti-EGFR antibody using peroxidase-conjugate and DAB chromogen. Note the membrane staining of carcinoma cells*



**References:**

1. Koo JS, et al. *Neoplasma*. 2011; 58:27-34.
2. Brustmann H, et al. *Int J Gynecol Pathol*. 2011 Jan; 30:76-83.
3. Vranic S, et al. *Hum Pathol*. 2010 Nov; 41:1617-23.

**REF** Z2356 (1.0 ml) (Concentrate); Z2356B (1mg/1ml)